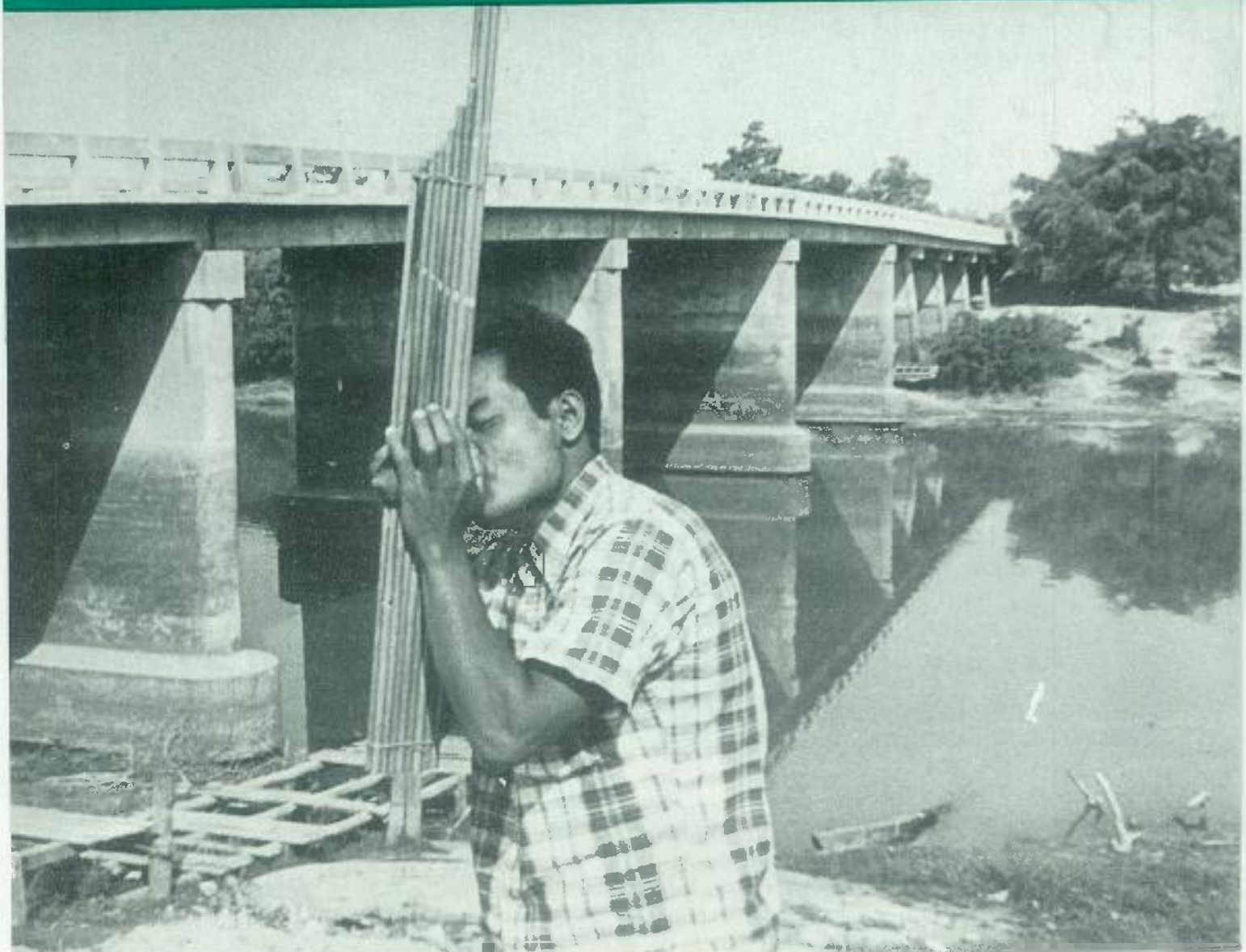


NEW ZEALAND

Engineering

THE JOURNAL
OF THE NEW ZEALAND INSTITUTION OF ENGINEERS





stresscrete GROUP OF COMPANIES

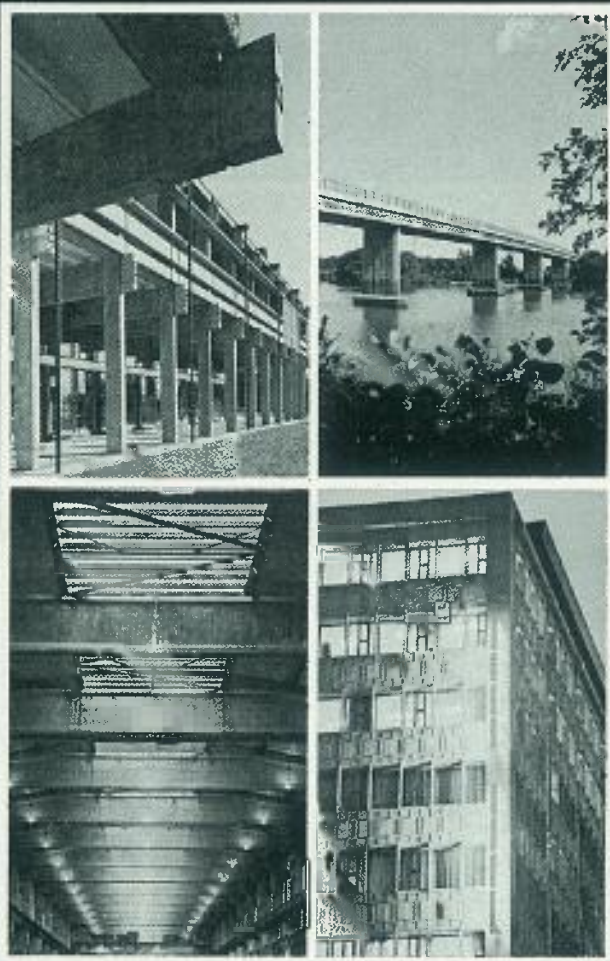
NEW ZEALAND'S ONLY NATIONALLY ASSOCIATED GROUP OF PRESTRESSED CONCRETE COMPANIES

Translating ideas — your ideas, that's our idea of service. And because we deal in a very special product — CONCRETE — we realise the need to confer closely with you on all aspects of your planning.

The Stresscrete Group of Companies throughout New Zealand have designed and assisted to build some very important buildings, bridges and carparks in prestressed, precast concrete.

With Stresscrete building systems, precast, prestressed concrete becomes flexible in design and economical in cost.

But let us stress that preplanning pays off in savings, ease of planning and reduces effective building time. Call any of our nationally situated companies.



FOR NEW IDEAS
ON BUILDING
EFFECTIVENESS
ASK ABOUT



stresscrete

Stresscrete Group Associated Companies at: Auckland, Kaitiaki, Paeroa, Hamilton, Rotorua, Stratford, Bulls, Wellington, Nelson, Blenheim, Christchurch, Greymouth, Invercargill and Technically Associated Company at Mt. Maunganui.



N. Z. I. E.

news section

A supplement to "New Zealand Engineering" sent to all members of the N.Z. Institution of Engineers
President: E. W. de Lisle, M.Sc.(Hons), C.Eng., F.I.E.E., F.N.Z.I.E.
Secretary: R. W. K. Stevens, C.B.E.

The Secretary's Newsletter

FAMILY EXCHANGE SCHEME

WE have received from the International Exchange Company of Maidstone, England, details of an exchange scheme sponsored by the United Kingdom Association of Professional Engineers. The I.E.C. will arrange for New Zealand engineers wishing to visit the United Kingdom, with or without their families, to be accommodated with a British engineer's family, either as paying guests or on an exchange basis. If the visit is made on an exchange basis the only expenses payable would be travel costs and spending money, with the British family visiting New Zealand at some later date.

The scheme also applies to teenage children, the I.E.C. arranging for an exchange of visits between British and New Zealand children, each staying with the other's family.

Any member wishing to have further details of the scheme should communicate with the secretary, P.O. Box 12241, Wellington.

FORTHCOMING CONFERENCES, SEMINARS, COURSES 1973

Conferences and seminars

14-15 May: Symposium on energy conservation in buildings. Victoria University of Wellington. Inquiries to S. Hampton, Ministry of Works, Wellington, or G. Rands, Beca, Carter, Hollings and Ferner, P.O. Box 6345, Auckland.

15-17 May: Eighth New Zealand mathematics colloquium. University of Waikato, Hamilton. Inquiries to A. G. French, University of Waikato.

21-25 May: A.I.S.C. conference on steel developments. Newcastle, N.S.W. Programme to include latest advances in steel structures, technological developments in steel materials, fabrication and construction planning, and planning and design of multi-storey buildings. Inquiries to Australian Institute of Steel Construction, P.O. Box 534, North Sydney 2060.

11-16 June: Conference on road engineering in Asia and Australasia.

Kuala Lumpur. Inquiries to joint secretaries, R.E.C., P.O. Box 223, Petaling Jaya, Selangor, Malaysia.

10 August: Symposium on tall buildings. Annexe to the Building Centre, Auckland. Inquiries to Dr R. Shepherd, School of Engineering, University of Auckland.

13-17 August: Conference on tall buildings. University of Sydney. Details from the secretary, N.Z.I.E., P.O. Box 12241, Wellington.

16-18 August: Symposium on increasing efficiency in the building industry. Wellington. Inquiries to C. M. Strachan, M.N.Z.I.E., P.O. Box 9215, Wellington.

21-23 August: Acoustics symposium. University of Auckland. Inquiries to the academic secretary, Centre for Continuing Education, University of Auckland.

29-31 August: Nelcon 1973 (National Electronics Conference). Christchurch. Inquiries to R. D. Spence, M.N.Z.I.E., Municipal Electricity Department, Christchurch.

Courses

The University of Auckland Centre for Continuing Education offers the following courses for engineers:

15 March (10 weekly sessions): Structural stability—theory and practice.

29 March (12 weekly sessions): Signal processing in engineering systems.

8 May (one-day course): Metrication—SI units in civil and mechanical engineering.

11 May (one-day course): Welding of concrete reinforcing steel.

10 and 11 May: Engineering applications of statistics.

24 May (10 weekly sessions): Digital computer simulation.

17 July (10 weekly sessions): Matrix methods for the analysis of faults in power systems.

17 July (10 weekly sessions): Matrix analysis of grids and plates.

18 July (six weekly sessions): Electronic instrumentation for industrial engineers.

19 July (10 weekly sessions): Ultimate strength design in reinforced concrete.

16 August (10 weekly sessions): Statistical methods in engineering.

For further details and brochures in above courses, apply to the academic secretary, Centre for Continuing Education, University of Auckland, Private Bag, Auckland.

N.Z. PLANNING INSTITUTE CONFERENCE 1973

The 1973 annual conference will be held in Christchurch from 14 to 16 May inclusive. The theme of the conference will be "Public uses and open space in relation to district and regional planning".

The opening will be held at the Christchurch town hall and the main venue will be at the Avon Motor Lodge, where accommodation will also be available.

A variety of speakers will present papers to the open sessions of conference during Monday and Wednesday. The business session of conference will be held on the Tuesday and for non-Institute members tours have been arranged either to Akaroa or Arthur's Pass, depending on numbers.

Speakers will be presenting papers on the following topics:

Design aspects of the Christchurch town hall—F. M. Warren.

Planning for public works to be located on land which is already built upon or developed—W. H. Parker.

The provision for public works in planning schemes—J. R. Milligan.

Public open spaces of national and regional importance—D. D. Miller and F. S. Robinson.

Estuaries and harbours in relation to town planning—Panel discussion.

Planning for Commonwealth Games facilities—R. Scott.

The influence of open spaces and public uses in urban form—M. Douglas.

Further details may be obtained from the N.Z. Planning Institute conference secretary, P.O. Box 237, Christchurch.