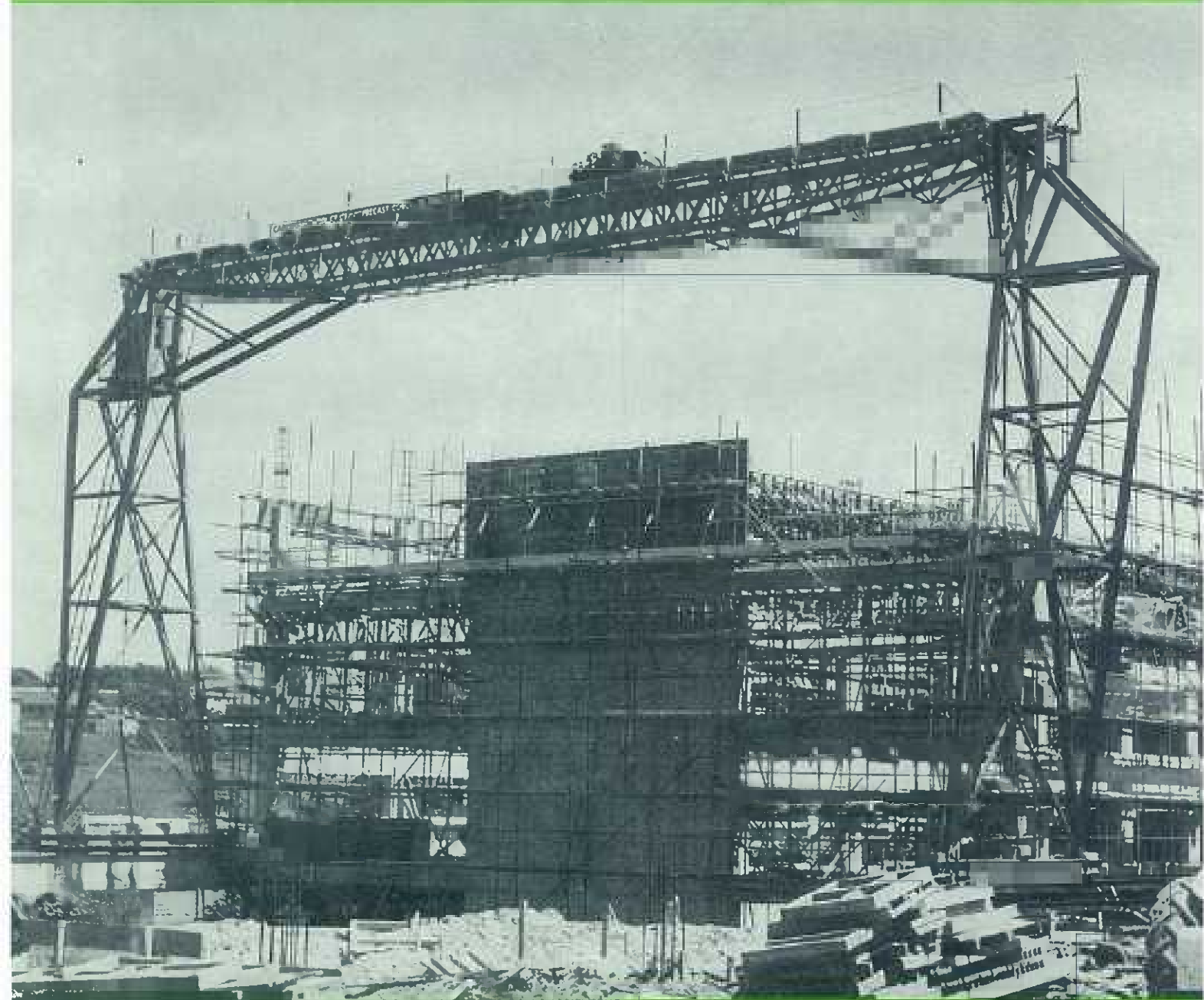


NEW ZEALAND

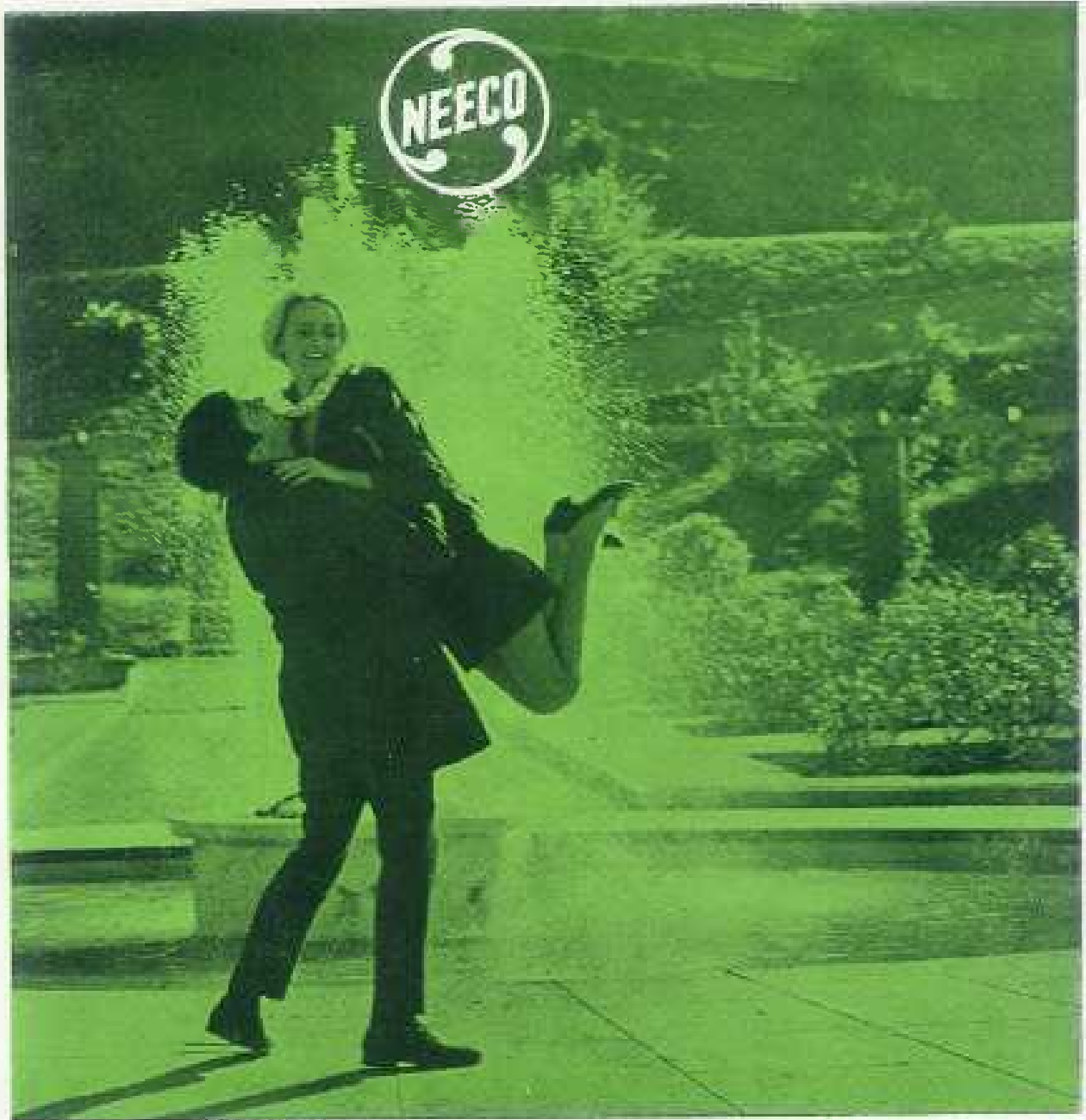
Engineering

Vol. 24, No. 5 : 15 May 1969



THE JOURNAL OF THE NEW ZEALAND INSTITUTION OF ENGINEERS

Registered at the General Post Office, Wellington, as a newspaper.



There are some things you don't know about Neeco...

Did you know that Neeco supplied the fountain for the Lady Norwood Rose Garden, pictured above! To the delight of Wellington, it suddenly appeared in the Botanical Gardens one day. Neeco are the largest electrical wholesalers in New Zealand, with eighteen outlets, a staff of almost 300 including trained engineers, skilled sales and service staff, and a reputation proudly associated with every major

electrical job in the country. But they love to try their hand at anything unusual — like importing a fountain or a mobile crane, tiling the Christchurch tunnel, lighting up a trotting track.

You can afford to be adventurous when you're number one!

NEECO WHOLESALERS LIMITED

A member of the Cable Price Downer Group 17.9



N. Z. I. E.

news section

A supplement to "New Zealand Engineering" sent to all members of the N.Z. Institution of Engineers

President: J. C. North, B.E., C.Eng., F.N.Z.I.E., M.I.C.E.

Secretary: R. W. K. Stevens, C.B.E.

The Secretary's Newsletter

Council notes

THE 1969 Council of the Institution held its first full meeting on 1 April, and the following decisions were made:

1970 N.Z.I.E. Conference

The 1970 conference is to be held in Dunedin from 9 to 13 February. The Council has decided to revert to the traditional five-day conference with the object of giving more time for the meetings of the Divisions and Technical Groups and for the Annual General Meeting of the Institution. The final details have yet to be worked out by the Branch Committee but it is expected that the conference will open on the Monday morning and close with some form of social event on the Thursday evening, Friday being devoted to visits.

The Institution Coat-of-Arms

The letters patent of the coat-of-arms have now been received, and the Council has authorised the reproduction of the full coat-of-arms on Institution publications, including this newsletter. Estimates are being obtained for the production of a colour supplement to the *Journal* in which the coat-of-arms will be reproduced, accompanied by a description of the achievement.

The Council has not yet decided which parts of the full coat-of-arms are

to be used on the Institution letter-head, the Institution tie, and other property, but an announcement will be made shortly.

The Professional Engineer's Year Book

The publishers of the *Journal*, Technical Publications Ltd., have offered to produce a 1969 issue of the Professional Engineer's Year Book and this offer has been accepted by the Council. The value of this publication depends largely upon the accuracy of the information supplied by members and it is requested that any member who has not notified the Institution of a change of address does so without delay.

The names of members who are in arrears of subscription, i.e., who have not paid their subscriptions for 1968, will not be included in the year book unless the arrears are paid before 31 May 1969. Each financial member will receive a copy of the 1969 year book, probably in July, and additional copies will be available from the publishers at a price to be determined later.

The Institution Publication "Careers in Engineering"

The booklet, *Careers in Engineering*, is now out of print and a revised version is being prepared. The Council has decided that the new booklet will not be made available in quantity as "hand-out" material at Dobson Lectures and similar meetings, but will be sent to any genuine enquirer. As "hand-out" material a leaflet giving an outline of

the contents of the new booklet will be printed and this will be available to Branches in reasonable quantities.

It has been brought to notice that the Metal Trades Federation also has a booklet with the title, *Careers in Engineering*, and consideration is being given to the adoption of an alternative title for the Institution booklet.

Review of the Institution Organisation and Administration

The convenor of the task committee charged with the review of the organisation and administration of the Institution, E. R. Ireland, reported to the Council that the committee had met almost weekly since the end of January and had found the task more complex than had been envisaged. Satisfactory progress was being made but it appeared unlikely that the report of the committee would be ready for the Council's consideration before July, and it could be even later.

The National Committee on Earthquake Engineering

The Council was advised that the membership of the National Committee for Earthquake Engineering, a semi-autonomous body serviced by the Institution, is now as follows:

A. G. Stirrat (Chairman, N.Z.I.E.), Dr R. D. Adams (Deputy-Chairman, Royal Society), G. S. Beca, W. P. Edwards, O. A. Glogau, A. N. Grigg, I. L. Holmes, Professor N. A. Mowbray, B. W. Spooner and C. W. O. Turner (all N.Z.I.E.), J. Blake-Kelly (N.Z.I.A.), H. E. Fyfe and Dr R. D. Northey (Royal Society) and J. L. Gill (Earthquake and War Damage Commission).

One vacancy remains to be filled by the Royal Society.

Found at the 1969 Conference

A stick-pin in blue enamel and gold bearing the words *Rotary International - Past President*. The owner should contact the Secretary of the Institution at Molesworth House, 101 Molesworth St., Wellington N.I.

Local Bodies Division News

The Annual Meeting of the Local Bodies Division resulted in the following Committee being elected:

Chairman: Mr P. G. Evans.

Secretary-Treasurer: Mr M. D. Macphee.

Committee: Messrs Cotton, Hall, Hartley, Hardy, and Symons.

All the members of the Committee this year are from the southern part of the North Island to enable meetings to be held reasonably easily.

Directives issued by the Meeting to the Committee were:

(1) That the Division direct the Committee to meet at least once every three months.

(2) That one of the first duties of the incoming committee was to investigate the draft rules and bring down a recommendation to the next Annual General Meeting of the Division

(3) That the Committee investigate the question of salaries of all engineering staff with regard to some continuity.

(4) That there be liaison with the Municipal Division in such matters common to both bodies.

(5) That interest be stimulated within the Division for the presentation of technical papers.

(6) That the Committee formulate standard conditions of appointment.

(7) That the question of corresponding member be referred to the incoming Committee with the view to having one in each Branch.

(8) That the Committee keep members informed by whatever means are available.

The Committee held its first meeting on 13 March at which preliminary discussion on methods by which the directives could be implemented were discussed. The next meeting will be on 10 April at Levin.

Any members who wish to comment on any aspect of the Local Bodies Division can do so by writing directly to the Secretary: Mr M. D. Macphee, c/o Manawatu Oroua Electric Power Board, Private Bag, Palmerston North.

The Division has been asked to comment on NZSS 623, but due to lack of time was unable to do so by the date specified. Any member who has not had the opportunity to express his view at his Local Branch level should send any comments he wishes to make direct to Mr J. B. Rowntree.

Changes in the Roll of Members

The following additions to and changes in the Roll of Members result from recent decisions of the Council, subject to confirmation under the provisions of Rule 7.1 where applicable.

ADDITIONS

Members:

- M. C. J. W. Barton, B.E. (Mech), 16 Glendevon Place, Tokoroa.
- M. E. G. Fox, Associate Member of I.C.E., 89 Glanmire Road, Newlands, Wellington.
- M. K. N. Grantham, M.I.E.E., A.M.I. Loc. E., 35 Kotuku Street, Porirua.
- M. J. E. Hirst, B.F. (Elect), 165 Bankwood Road, Hamilton.
- M. S. King, B.E. (Mech), 5 Halberg Street, Papakura.
- M. J. E. Leggett, Associate Member of I.Mech.E., 3 Patikura Place, Turangi.
- M. D. Niven, B.E. (Hons) (Civil), 7 Gower Street, Trentham.
- M. J. I. Smart, B.E. (Civil), 11 Linton Street, Blenheim.
- M. B. Wong, B.E. (Civil), 102 Coultts Street, Kilmirnie.

Associates:

- Assoc. D. C. Forrest, M.N.Z.I.E.T., P.O. Box 39, Greymouth.
- Assoc. A. G. E. Greig, M.N.Z.I.E.T., 20 Buchanan Street, Timaru.
- Assoc. C. C. Langley, M.N.Z.I.E.T., 4 Tom Parker Avenue, Napier.
- Assoc. J. T. Turoa, P.O. Box 400, Thames.
- Assoc. G. M. Wilson, M.N.Z.I.E.T., M.N.Z.I.D., P.O. Box 2505, Christchurch.

Graduates:

- Grad. H. B. Adcock, Associate Member of I.C.E., 59 Compton Crescent, Taita.
- Grad. C. J. Dudman, B.E. (Civil), c/o M.O.W., Haast.
- Grad. I. D. Hollister, B.E. (Civil), 37 Sayegh Street, Auckland 5.
- Grad. R. A. Sutton, B.E. (Elect), 6 College Road, Remuera.

PROMOTIONS

Members Transferred to Fellows:

- F. R. H. Ellis, M.I.F.E., P.O. Box 12041, Wellington.
- F. R. F. Gapes, B.E., M.I.Mech.E., A.N.Z.I.M., c/o Mr E. Souder, I.B.M. Corp., 618 Sth. Michigan Avenue, Chicago, Illinois 60605, U.S.A.
- F. R. L. James, B.Sc., M.I.C.E., A.M.I. Struct. E., A.A.S.E. (Civil), 17 Wesley Chambers, Hamilton.

Graduates Elected Members:

- M. R. G. Biggar, B.E. (Mech), A.M.I. Prod. E., P.O. Box 29, Shannon.
- M. D. S. Davis, B.E. (Civil), District Engineer's Office, N.Z. Railways, Auckland.
- M. K. D. Doig, B.E. (Mining), A.M.A.'sian.I.M.M., 859 Heaphy Terrace, Hamilton.
- M. R. S. Dowsing, B.E. (Civil), P.O. Box 12041, Wellington.
- M. J. A. A. Evans, B.Sc. (Civil Eng) (Hons), Associate Member of I.C.E., 27 Mary Huse Grove, Manor Park, Lower Hutt.
- M. I. J. Garrett, B.E. (Civil), 8 Mary Huse Grove, Manor Park, Lower Hutt.
- M. J. P. Geoghegan, B.E. (Elect), Associate Member of I.E.E., c/o N.Z.E.D., P.O. Box 108, Mangakino.
- M. J. A. Graham, B.E. (Civil), 571 River Road, Hamilton.
- M. P. B. Graham, B.E. (Elect) (Hons), M.Sc., Associate Member of I.E.E., 7 Tringham Street, Karori.
- M. R. K. Hawthorne, 42 Tui Glen Road, Auckland 10.
- M. B. F. Hill, B.E. (Mech), Associate Member of I.Mech.E., P.O. Box 12041, Wellington.
- M. J. W. D. Kirk, B.E. (Elect), Associate Member of I.E.E., 25 Stanley Road, Auckland 10.
- M. K-S. Luey, B.E. (Hons) (Elect), c/o N.Z.E.D., Private Bag, Wellington.
- M. Dr G. R. Martin, B.E. (Hons) (Civil), M.E. (Civil), Ph.D., University of Auckland, Papakura.
- M. P. J. Morgan, B.E. (Civil), P.O. Box 561, Tauranga.
- M. J. L. Munting, B.E. (Civil), 235 Maunu Road, Whangarei.
- M. J. Nolsoe, M.Sc. (Civil Eng) (Denmark), M. Danish. I.E., Flat 3, 367 The Terrace, Wellington.
- M. K. A. Paulin, 16 Ardmore Place, Christchurch 5.
- M. L. J. Peters, B.E. (Civil), Strassburg Street, Martinborough.
- M. M. R. Petricevich, B.E. (Civil), 61 Ferguson Street, Palmerston North.
- M. R. M. Rankine, Dipl. C.E. (Hons) (Loughborough), Associate Member of I.C.E., P.O. Box 11, Otorohanga.
- M. R. G. Renwick, 6 Imatra Place, Pakuranga.

- M. B. S. Rothwell, B.E.(Civil), 23 Mary Huse Grove, Manor Park, Lower Hutt.
 M. R. Sang, B.E.(Civil), P.O. Box 47, Gisborne.
 M. K. E. Small, B.E.(Elect), M.I.E.Aust., 147 Helensburgh Road, Dunedin.
 M. R. D. Spence, B.E.(Elect), 536 Hagley Avenue, Christchurch 1.
 M. G. B. Stanton, B.E.(Mech), P.O. Box 2046, Wellington.
 M. Z. J. Szymanski, B.E.(Civil), 15 Mary Huse Grove, Manor Park, Lower Hutt.
 M. G. L. Tapper, 165 Ritchie Street, Invercargill.
 M. A. W. Wood, Associate Member of I.C.E., P.O. Box 422, Suva, Fiji.
 M. M. F. Wright, B.E.(Elect), 22 Chartwell Drive, Wellington 4.

Student Elected Member:

- M. D. I. Tyler, Flat 2, 4 Avenham Walk, Auckland 3.

N.Z.I.E. Branch Notes

At the March meeting Mr F. G. Dean addressed the meeting on "Systems Building". Mr Dean was sent by the Ministry of Works to study cost planning in England and worked with the staff of the Hertfordshire County Council on the design and supervision of a wide range of educational and health-service buildings and offices. The planning of these buildings, based on "System Building" which uses standard building components arranged in a modular pattern, was explained by Mr Dean.

A group of 34 members, including a few wives and friends, attended the Convention at Maraetai II on Saturday, 29 March. Mr Norm Moyes, the resident engineer, addressed the meeting and explained the methods being employed in the slip-forming of the penstocks and some of the difficulties which had to be overcome. Following the talk, the group was conducted over the site by Mr Moyes and other engineering staff on the job. Approximately half of the group adjourned to the Okoroire Hot Springs Hotel and enjoyed a dip in the hot pools and a most delectable dinner.

On Saturday, 24 May 1969, the Branch is holding a wine and cheese social at 8 p.m. at Ferrybanks Lounge, Hamilton. An accomplished dance band is booked and waiters will serve a large variety of wines. Out-of-town members and friends are welcome, and arrangements are being made for billeting by the Hamilton hosts.

Most members will be aware of the Branch's joint participation with the N.Z. Institute of Architects in organising this year's University Extension Course. The course is entitled "Design Decisions in the Building Industry" and comprises 10 lectures to be delivered by speakers engaged in the design professions and from the Universities. The first lecture is to be held on 5 June.

Candidates for Election

Any member wishing to communicate with the secretary on the subject of these elections should do so not later than the twelfth day of the month following publication.

For election as Members

Evans, C. W.; Galloway, I. H. H.; Mead, F. H.

For election as Associates

Hamilton, R. D.; Verstappen, C. F.

For admission as Graduates

Bell, W. J.; Brown, G. S.; Chan, Y. K.; Christian, J. B.; Darnell, W. J.; Gardiner, D. A.; Green, D. J.; Henwood, J. W.; Hunton, D. A.; Kingsford, D. G.; Norrie, J. A.; Phillips, M. H.; Purchase, R. K.; Percy, D. R.; Reid, W.; Sime, A. J.; Stannard, M. C.; Townsend, H. W.; Wallach, L. K.; Ward, R. J.; Wentworth, J. N. R.

Graduates for election as Members

Pearce, R. J.; Pope, P. B.; Stuart, C. R.

Students for promotion to Graduates

Bidwell, V. J.; Bowler, G. R.; Shute, D. R.; Smith, P. C.

Profile . . .

G. A. HUTCHINSON, B.E. (Civil), M.I.C.E., F.N.Z.I.E., a member of Council, received his early training with the D.S.I.R. in Auckland. After graduating he joined the Auckland City Council, acting as divisional engineer (1952-57), construction engineer, water supply division (1957-59), and personal assistant to the director of works and city engineer (1959-63). Since 1963 he has been chief design engineer. During the war he worked on armament development.

Mr Hutchinson has been vice-chairman of the Auckland branch and a visa member of the 1961 conference committee division. He is the N.Z.I.E. appointee on the National Committee and on the Soil Mechanics and Foundation Engineering Society, and is a liaison member on E.S.C.O.W. He has served as executive member for the Auckland branch on the N.Z. Institute of Public Administration and is at present a member of the interdepartmental committee on the utilisation of organic wastes.

After pioneering mechanical municipal composting in Auckland by investigations with a compost pilot plant from 1948 to 1960, he made a world study tour for the City Council in 1961. He finally designed and constructed New Zealand's first full-size municipal plant for processing 100 tons per day of city refuse into compost.

He was awarded the Hume Prize in 1966 and the Angus Award in 1968 for a paper presented to the 1967 Conference of the Institution. He is the author of eight major papers, published in *The Commonwealth Engineer*, *The Municipal Engineering Journal*, *Australian Construction and Engineering Journal*, *Compost Science Journal*, *Royal Society of Health Journal*, and *N.Z. Engineering*.

He is head of the rescue section, Civil Defence Organisation, Auckland, and a member of the Auckland Presbytery. He is also session clerk of the Somervell Presbyterian Church, Remuera. When relaxing from the problems of compost plant design, Mr Hutchinson is keenly interested in trout fishing, shooting, and water skiing, and he has built his own darkroom, his own home, lake-side bach, two caravans, and two boats.

