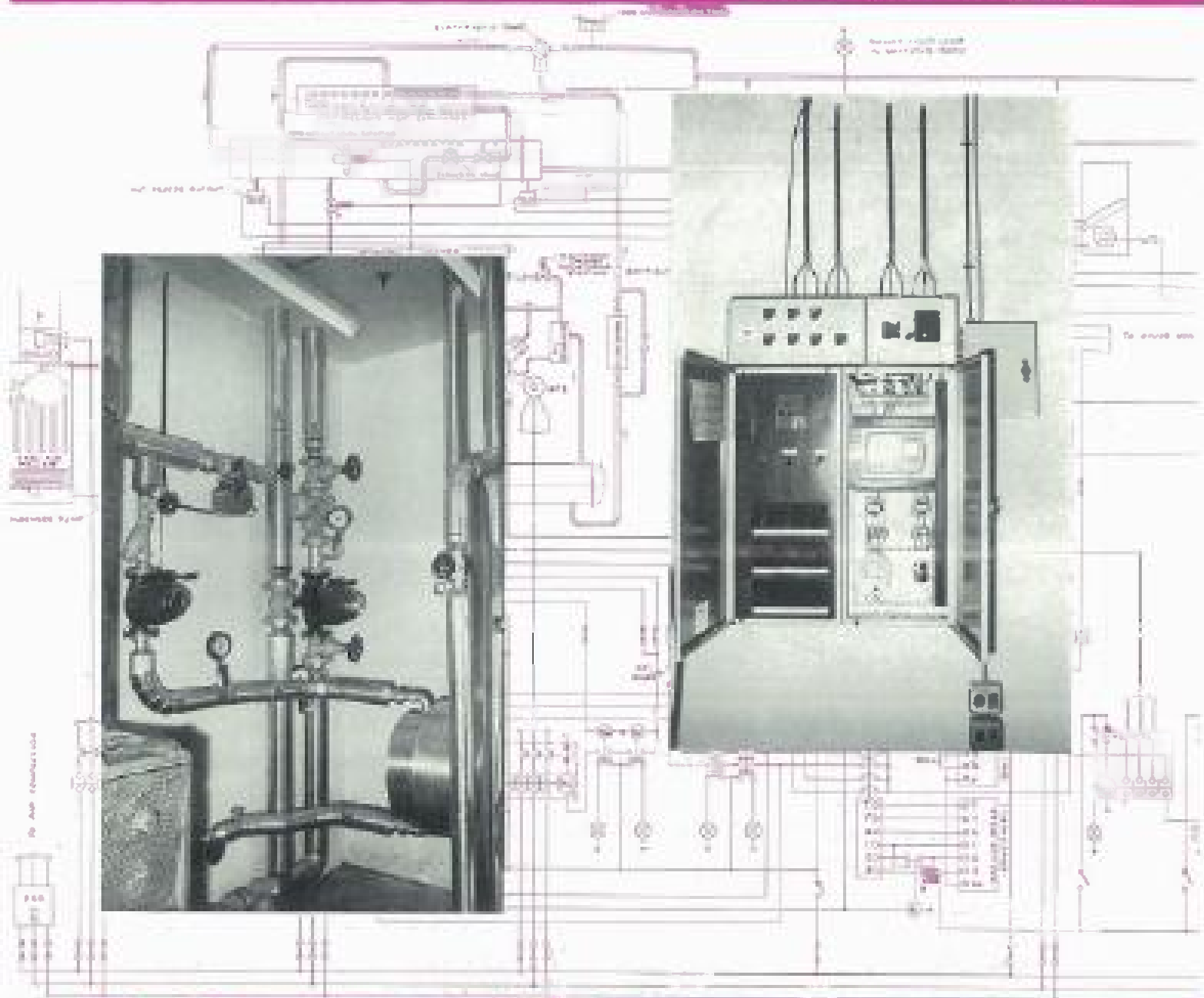


NEW ZEALAND

# Engineering

Vol. 24, No. 3

15 March 1998



THE JOURNAL OF THE NEW ZEALAND INSTITUTION OF ENGINEERS

Registered at the General Post Office, Wellington, as a newspaper.



**WORLD'S MOST  
COMPREHENSIVE RANGE  
OF DEPENDABLE DIESEL  
GENERATING SETS!**

**“PUMALERT” DESIGNED FOR STARTING  
AND ACCEPTING LOAD WITHIN SIX  
SECONDS OF POWER FAILURE . . .**

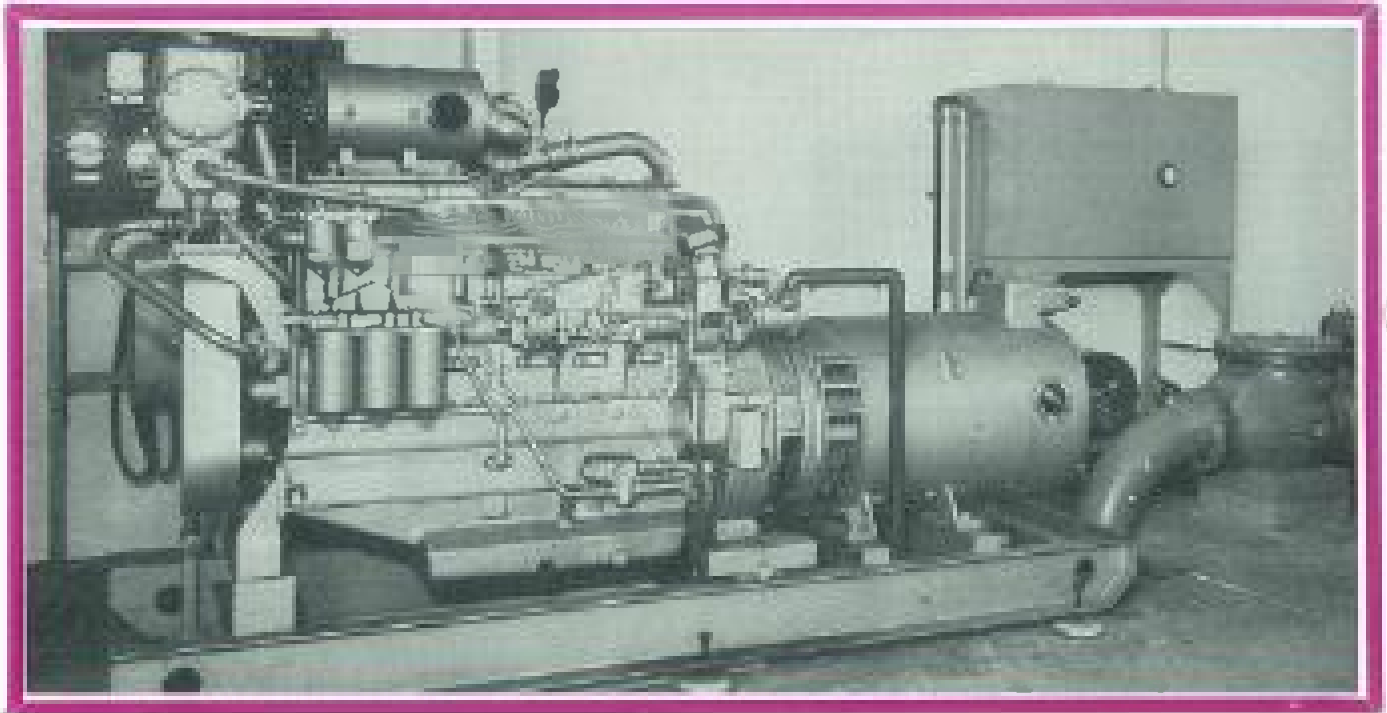


Illustration shows a 140 KVA set, complete with control panel, installed in a City Council sewage pump station.

“Pumalert” sets up to 1,000 KVA are available for stand-by duty in hospitals, banks,

freezing works, supermarkets, computer centres, telecommunications, factories, sewage and general pumping stations.

“Pumalert”—installations in operation from Whangarei to Invercargill.

New Zealand Agents:

**CORY-WRIGHT & SALMON LIMITED**

P.O. BOX 1230, WELLINGTON

Also at: AUCKLAND — CHRISTCHURCH — DUNEDIN — HAMILTON — RO. OKUA — HASTINGS — PALMERSTON NORTH  
WANGANUI — LOWER HUTT — INVERCARGILL



# N. Z. I. E.

## news section

A supplement to "New Zealand Engineering" sent to all members of the New Zealand Institution of Engineers

President: J. C. North, B.E., C.Eng., F.N.Z.I.E., M.I.C.E.

Secretary: R. W. K. Stevens, C.B.E.

### The Secretary's Newsletter

#### The Annual Conference - February 1969

**F**OUR HUNDRED and more of the members of the Institution and their ladies, a fine day, the Wellington Town Hall, the Minister of Works, and the Mayor of Wellington—and it all added up to a successful opening, on the 12th of February, of the 1969 Conference. And the 1969 Conference went on being a success, due greatly to the efforts of the conference committee and the publications committee, who had provided an interesting programme, with emphasis on the role of the professional engineer in management and in national development.

The highlight of the first day was the president's address, published in this month's issue of *N.Z. Engineering*. Mr Spooner delivered the address with clarity and skill, speaking to full benches in the main lecture room of Victoria University, to which the conference had adjourned after the first morning session. The president not only gripped the attention of the members and their guests who were present, but, obviously, had chosen a subject that meant a great deal to the many ladies who were there as well. The ovation that he received was a tribute to a thoughtful and well-reasoned address, ably presented.

On Thursday, the conference got into its full stride, with technical papers right through the morning and the first half of the afternoon. Then, at quarter to four, it was the turn of the guest speaker of the Conference, the Hon. Charles Court, Minister for Industrial

Development in the Government of Western Australia. Mr Court had attended several of the conference sessions, and had impressed members who had seen or met him as a man of obvious ability and presence; even so, none of us were quite prepared for the drive and enthusiasm which he displayed as he talked about what was obviously his favourite subject, the development of Western Australia. The text of the address will be published in a later issue of *N.Z. Engineering*, but only those who were there will get full value from Mr Court's participation in the conference. His joy in the achievements of his state had to be seen to be shared.

In the evening Mr Court took part in a well-attended panel discussion on the role of the engineer in national development. The other members of the panel were Dr Muriel Lloyd Prichard, associate professor of economic history at the university of Auckland, Dr H. C. Holland, president of the N.Z. Manufacturers' Federation and member of the University Grants Committee, Mr H. C. Lang, Secretary to the Treasury, Mr C. H. Benney, chairman of the Wellington Gas Company, and Mr E. R. Garden, a past-president of the Institution. The discussion was most ably chaired by Mr R. A. J. Smith, chief engineer of the Auckland Harbour Board.

As a group, the panel provided a stimulating and provocative discussion. Their final message was that the engineering function was currently accepted as being that of carrying out the policies of others: if individual engineers wished to become policy-makers, and, through their efforts, change current thinking about the function of the profession as a whole, then it was up to those individuals to fit themselves by study and

experience for higher administrative positions. It would be invidious to choose any one speaker as being more effective than the others; but the thanks of the Institution must go to Mr Garden, who, in his anxiety not to let the conference committee down, had left a bed of sickness to take his place on the panel, and was in some distress.

Friday was the day for visits, with some technical papers in the afternoon; the fireworks were kept until the evening, the occasion of the annual general meeting. There were 117 members there, and almost from the beginning it became obvious that this was to be no dull, routine affair. Discussion was fierce on a number of points, and formal motions and points of order came thick and fast. No one can have envied the president the job of controlling the meeting. However, he did control it, the business was done, and the evening ended with the induction of the new president, Mr J. C. North.

Two papers on Saturday morning, then the meetings of the divisions and technical groups were held. Here the squeeze was felt, because of the wide range of interests that these organisations represent, and it seems that there is a real case for allocating more time to these meetings during future conferences.

The last function of the conference, the dinner-dance, was held on Saturday night, and it was a thoroughly enjoyable and happy occasion. During the evening, the chairman of the Awards committee, Mr G. R. Milne, presented the Institution Awards for 1969. A list of recipients appears in this month's issue of *N.Z. Engineering*.

Members generally agreed that it had been a good conference, and, certainly, there could have been no criticism of the conference organisation, as handled

#### 1970 Conference

The 1970 Conference of the Institution will be held in Dunedin during the week of 9-14 February 1970.

## PROMOTIONS

### Members transferred to Fellows

- F. K. S. Smith, B.Sc.(Eng)(London), M.I.C.E., "Tara", 161 Pampisford Road, South Croydon, CR2 6DE, England.  
 F. D. K. Taylor, B.Sc., D.I.C., M.I.C.E., P.O. Box 5271, Auckland  
 F. R. M. Tonkin, B.E.(Civil), M.I.C.E., M.A.S.C.E., P.O. Box 5271, Auckland.

### Graduates elected Members

- M. J. S. Cory-Wright, B.E.(Elect), B.Sc., B.Com., M.I.E.E., A.R.A.N.Z., c/o The English Electric Co. of N.Z. Ltd., P.O. Box 1221, Auckland.  
 M. T. R. Cudby, B.E.(Elect), Associate Member of I.E.E., N.Z.B.C., P.O. Box 388, Dunedin.  
 M. J. E. Foden, B.E.(Elect), 94 Wadestown Road, Wellington.  
 M. P. Rushworth, B.E.(Elect)(Hons), 21 Beauchamp Street, Linden, Wellington.

## Profiles . . .



**PETER WHITAKER TAYLOR.** B.Sc., B.E.(Hons), C.Eng., A.M.J.C.E., A.M.I.Struct.E., M.A.S.C.E., (M), a senior lecturer in civil engineering at the University of Auckland since 1957, is the author of a paper recently pub-

lished in "New Zealand Engineering" (Soil Dynamics, "N.Z. Engineering", 23 (6): 225-9 (15 June 1966)).

Mr Taylor joined the University of Auckland in 1953 as a lecturer. Previously he had been an engineering assistant with the Auckland City Council, and in 1947 was employed in Persia for three years by the Anglo-Iranian Oil Company. In 1950, he was a research student and demonstrator in soil mechanics at the University of Cambridge, and from 1951 to 1953 he was a member of the design staff of the London County Council.

Mr Taylor is a committee member of the New Zealand National Society for Soil Mechanics and Foundation Engineering, and a member of the Road Research Unit. He was secretary of the organising committee of the fifth A.N.Z. Conference on Soil Mechanics and Foundation Engineering in 1967. In 1961 he received a Carnegie grant for a study tour of the U.S.

**FRANK PAOSHAN LU** is a senior lecturer in civil engineering at the University of Canterbury, and the author of a number of papers on the critical path method.

Mr Lu was born in Tanghai, Chekiang, China, in 1925. In 1945 he gained a Bachelor of Science in civil engineering at St. John's University, Shanghai, and became a registered engineer in New Zealand in 1951. He joined the N.Z.I.E. in 1952, and is at present a member of Council.

A foundation member of the New Zealand Chapter of the Australian Institute of Building (1964), Mr Lu was Erskine Fellow, University of Canterbury, in 1967.

His practical engineering experience extends over some 12½ years, including 1½ years with U.N.R.R.A. in China on highway



engineering, 1½ years with the Shanghai municipal government, nine years with the Ministry of Works in New Zealand, and six months in the U.S.A. on a work/study course in building management.

## Wanted: Institution Proceedings

Headquarters has some serious gaps in its stocks of the published Proceedings of the Institution. It possesses only one complete set, volumes 1 to 38, covering the period from 1914 to 1952.

While there are good stocks of most volumes, Headquarters has no spare copies of volumes 11 (1924-25) and 13 (1926-27), and only one spare copy of volume 34 (1948).

If any member possesses one or more of these volumes and is prepared to donate them to the Institution, Headquarters would be most grateful.

With two complete sets available, it would then be possible to make the surplus copies available to branches and individual members as they require them.

## Candidates for Election

Any member wishing to communicate with the secretary on the subject of these elections should do so not later than the twelfth day of the month following publication.

### For election as Members

Carter, R. L.; Earl, Dr W. B.; Eddy, D. C. A.; Parsons, H. P.; Roil, F. J.

### For election as Associates

Brokenshire, B.; Hlde, F. G.; McDonnell, L. S.; Vadjjal, A.

### For election as Companion

Keys, L. J.

### For admission as Graduates

Baird, K. A.; Boshier, J. F.; Chandler, N. S.; Culbert, R. J.; Cuthbert, G. D.; Excell, G. G.; Fagan, N. A.; Fitchett, P. F. R.; Frengley, R. M.; Hickling, C. B.; Jones, J. A.; McNaughton, D. J.; Nicholas, D. B.; Park, A. G.; Petrie, S. A.; Slater, K. R.; Swan, P. D. F.; Taylor, A. E. M.; Vincent, R. S.; Wells, R. W. L.; Westeldine, M. A.; Whaley, C. H.; Withy, D. R.

### For admission as Student

Boilase, O. M.

### For transfer to Class of Fellows

Andrews, A. L.; Martin, A. D.; Otway, E. C. L.

### Graduates for election as Members

Breen, A. R.; Brimsley, C.; Busck, C. J. T.; Forsdick, J. W.; Henderson, W. J.

### Student for election as Member

Sherwin, L. S.

### Students for election as Associates

Broadbent, J. D.; Koustos, P.; Woollams, G. A.

### Students for promotion to Graduates

Clark, R. B.; de Bruyn, W. D. M.; Mair, A. G.; Pole, R. J.; Worth, D. P.

NEW ZEALAND

# Engineering

Vol. 24, No. 3 : 15 March 1969

**The journal of**

THE N.Z. INSTITUTION OF ENGINEERS, Fourth Floor, Molesworth House, 101 Molesworth Street, P.O. Box 12241, Wellington N.I.

President, J. C. NORTH, B.E., C.ENG., F.N.Z.I.E., M.I.C.E.

Secretary, R. W. K. STEVENS, C.M.K.

**Designed for**

The New Zealand engineer and planned to cover civil, electrical, mechanical, structural engineering and welding, this journal is received by all members of the N.Z. Institution of Engineers and the N.Z. Institute of Welding. Opinions expressed in the journal are not necessarily those of those two bodies or of the publishers.

**Published monthly by**

TECHNICAL PUBLICATIONS LTD., 127 Molesworth Street, P.O. Box 3047, Wellington, N.Z. Telephones: 44-163 and 44-164. Telegrams: Tecpub.

**Managing Editor**

F. N. STACE, B.E.(ELEC.MECH.), B.E.(MECH.), C.ENG., F.I.E.E., M.N.Z.I.E.

**Assistant Editor**

M. J. HUMPHRS, B.A.

**Advertisement Manager**

C. J. G. MCFARLANE

**Business Manager**

M. F. EADDY

**Overseas representatives**

**UNITED KINGDOM AND EUROPE:**  
SAWELL AND SONS LTD., 4 Ludgate Circus, London E.C.4. Telephone: FLEET Street 4333. Cables: Sawells, London E.C.4.

WADLEY AND GINN, 26 Burlington Drive, Bellinghe, Herne Bay, Kent. (Subscriptions only).

**U.S.A. AND CANADA:** S. S. KOPPE AND CO. INC., 610 Fifth Avenue, New York, N.Y. 10020.

**AUSTRALIA:** FRED M. WEHRTER, 1st Floor, 310 George Street, Sydney. Telephone BL4067.

**JAPAN:** SUN-GAEN SHIA LTD., Tenroku Hankyu Bldg., No. 5, 6 Chome Tenjinbashi-ji, Oyodo-ku, Osaka.

**Subscription**

Post free: New Zealand, \$5.00 per annum; overseas, \$7.00 (or 70s. or S.U.S.8.00) per annum.

**Leading article**

Town Planning and the Engineer ..... 81

**Articles**

Presidential Address: Engineering is for People *B. W. Spooner* 83

Stability in Process Control  
*H. A. Trethowen and F. N. Blackwell* 89

Report of Conference on the Engineering Technician Group 99

The Pulp and Paper Industry ..... *P. A. Burdett* 101

**N.Z.I.W. section**

Electroheat Treatment of Welded Constructions *P. J. Cooper* 105

**General**

Revision to Paper Announced ..... 88

Papers and Articles Received ..... 88

Conferences and Courses ..... 110

Personal ..... 110

Correspondence ..... 110

Public Service Division News ..... 111

Consultants' Notebook ..... 112

Rail Sections Hardened with Explosives ..... 113

Award Winning Papers ..... 114

New Zealand's Largest Office Building Nears Completion 114

An Engineer's Bookshelf ..... 115

**Cover picture**

As more and more new buildings rise above the landscape, engineers are finding it necessary to increase their knowledge of automatic control systems, particularly of temperature control systems. This month's cover shows part of an automatic control system on the left, with a control panel on the right. An article dealing with automatic control systems begins on page 89.

Member of the New Zealand



Association of Trade Publishers

# THIS IS A TRIED AND PROVEN **BBRV** ROCK ANCHOR

- POSITIVELY GRIPPED CONICAL ANCHOR
- PRESSURE GROUTED ANCHOR LENGTH
- WORLD WIDE PROVEN RELIABILITY
- COMPLETE ADAPTABILITY
- FORCES UP TO 1000 TONS



### *BBRV offers you:*

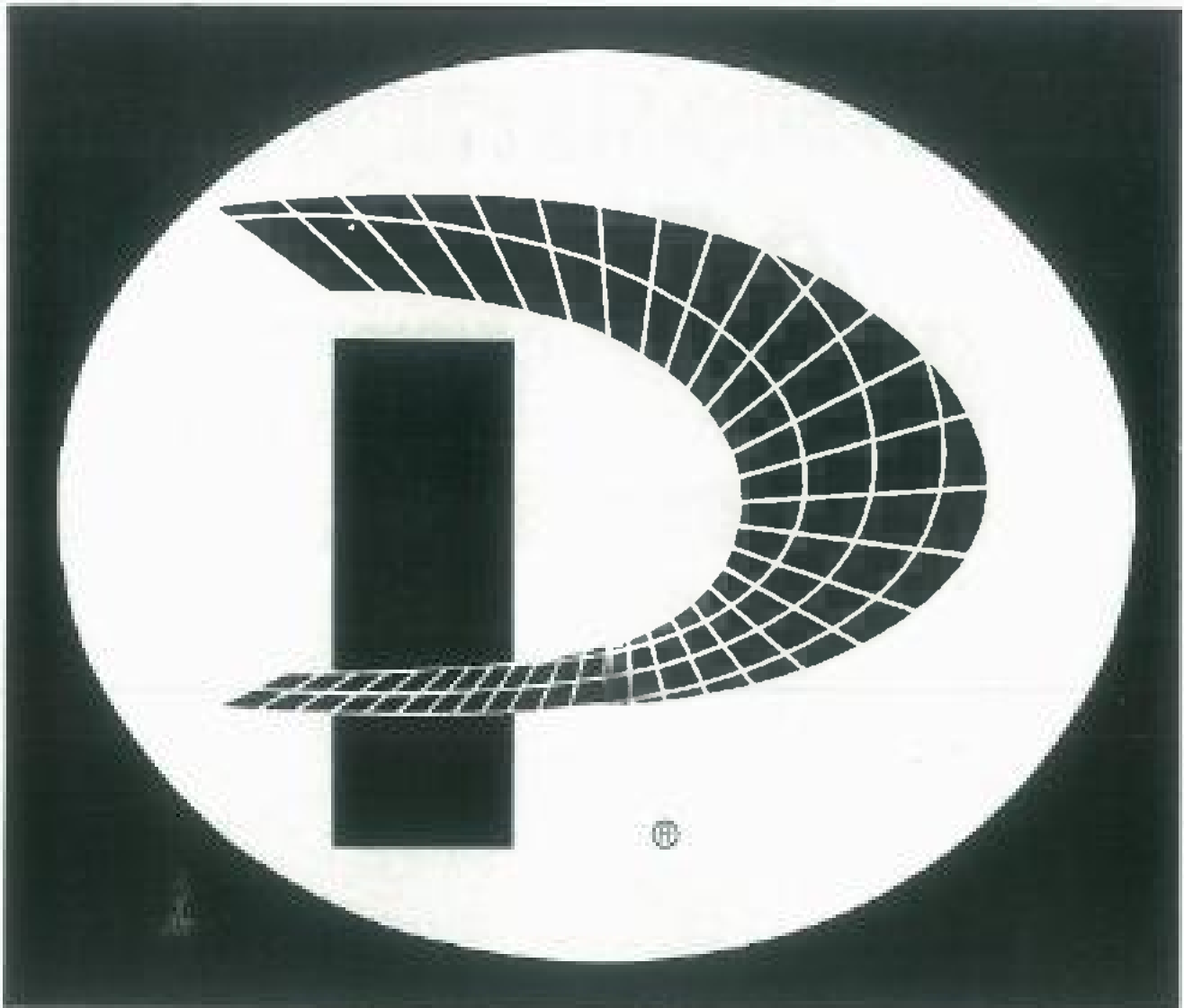
- The positive, non-slip anchorage.
- The widest range of cable sizes and anchorage types.
- A precision stressing service second to none.
- Free technical advice.

PROCESSES

# BBRV

FOR PRE-STRESSED CONCRETE

**BBR NEW ZEALAND LTD.,** MASTERTON — P.O. BOX 473 : TEL. 3450



# THE POWERS REGULATOR COMPANY

The sophistication of today's architectural engineering demands increasingly complex instrumentation. POWERS Environmental Control Systems, custom-engineered for the specific requirements of today's projects, provide dependable control of comfort levels in any heating, air-conditioning or cooling system.

Automatic temperature-humidity control systems by Powers, who pioneered the automatic control industry 78 years ago, are now available in New Zealand. Sole New Zealand Agents are Fletcher Mechanical Services, a division of Fletcher Construction.

*... Powers keeps you in control*



Private Bag, Auckland.

And at Wellington, Christchurch, Dunedin.

# A complete range of **ASEA** <sup>TYPE MA</sup> **ELECTRIC MOTORS** Now made in New Zealand

**DELIVERY OFF THE SHELF!**

TYPE	H.P.	SPEED
12	1/4	2820
14A	1	2860
14B	1 1/2	2880
16.5A	2	2870
16.5B	3	2870
18S	5	2870
18L	7 1/2	2910
21S	10	2920
21M	13 1/2	2920
12	1/4	1390
14A	1/2	1390
14B	1	1385
16.5A	1 1/2	1400
16.5B	2	1400
18S	3	1410
18L	5	1420
21S	7 1/2	1430
21M	10	1435
12	1/4	900
14A	1/2	890
16.5A	1	899
16.5B	1 1/2	870
18S	2	920
18L	3	930
21S	5	950
21M	6 1/2	950
18S	1	690
18L	2	690
21S	3	710
21M	4	700



Contact our nearest office for full price list and dimension drawings.

- \* Made in New Zealand for New Zealand conditions.
- \* Made to international standard dimensions. \* Totally enclosed. \* Fan cooled. \* Three phase.
- \* Squirrel Cage. \* 400/415 V. 50 cycles. \* Special shafts and mountings readily available.

**ASEA Electric (N.Z.) Ltd.**

Auckland.  
 P.O. Box 3239.  
 Telephone: 545-059  
 Telex: ASEAAUCK NZ 2301

Wellington.  
 P.O. Box 3239.  
 Telephone: 70-614  
 Telex: ASEAWELL NZ 3431

Christchurch.  
 P.O. Box 8079.  
 Telephone 43-136

W7160